



OVERALL EVENT PROGRESS

17 %

## QUESTIONS FOR YOUR CONSIDERATION

*We Are Looking to Improve Front Line Relationships and Need Your Input.*



The completion of the Pre TA–Test Frontline Relationships form is to provide feedback on improving our front line relationships. Front line meaning all (HSSE, Contractor Foreman, PEI, PE, Production, Field Leads, Etc.)

Please provide constructive feedback on topics such as technical material, duration to complete, training assessment, etc. Rating scale is between 1 and 5 – 1 being the least or worst, and 5 being the best or most. This form can be accessed from the QR code to the left.

Thank you,

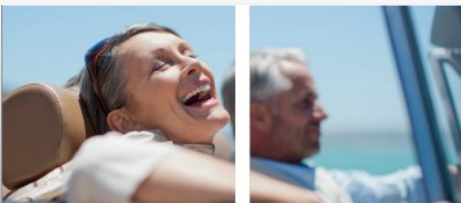
**Devin Weyland - TA Event Manager & Graham Polischuk – NRES**

*“Your attitude is like a box of crayons that colour your world. Constantly colour your picture gray, and your picture will always be bleak. Try adding some bright colours to the picture by including humour, and your picture begins to lighten up.”*

**Allen Klein**

## POWER OF POSITIVITY

*Life is Not Always Predictable & Problems Routinely Occur*



You can choose to deal with a problem with a positive or negative mindset. Choosing a positive mindset helps you be more resilient and bounce back from problems easier and faster.

or have more choice in how they react. Changing the frame of an experience can have a major influence on how you perceive, interpret and react to that experience.

Changing the way in which we view a situation is called reframing. The purpose of reframing is to help a person experience their actions, the impact of their beliefs, etc. from a different perspective (frame) and potentially be more resourceful

If a problem arises, you can choose to focus on the negative or acknowledge it and start to define what is the way forward. This is the classic glass is half full or half empty mindset .

### SCOTFORD WEATHER

Wed APR 19

DAY

5°

Feels like 1  
Cloudy with sunny breaks

☁ 40%

🌀 20km/h E

➡ 30km/h

☀ 3hr of sun

NIGHT

-4°

Feels like -8  
Scattered flurries

☁ 40% ❄ <1cm

🌀 20km/h E

➡ 30km/h

TURNAROUND STATS	LAST 24 HRS	OVER-ALL
No Treatment Case	0	3
Occupational Illness	1	1
First Aid	0	1
Medical Aid	0	0
Recordable	0	0
Life-Saving Rule Violation	0	0
Near Miss	0	1
Motor Vehicle Incident	0	3
Dropped Object	0	0
Hi Potential Incident	0	0
SIF	0	0
Env (Other/Spill)	0	3
LOPC (<100kg)	0	0
LOPC (>100kg)	0	0
Environmental Non-Comp.	0	0

# STEP

## Why is Housekeeping so Important?



Effective housekeeping can eliminate some workplace hazards and help get a job done safely and properly. Poor housekeeping can frequently contribute to accidents by hiding hazards that causing injuries.

- Keep floors, stairways, aisles, and other passageways clear of tools, equipment, trash, and other materials.
- Put tools away when they're not in use. Cover any sharp edges/use appropriate containers. Keep tools and materials away from edges when at heights.
- Stack materials carefully so they won't fall or block pathways.
- Clean up all spills immediately and properly, or call someone who can.
- Properly dispose of all trash.

# GOAL ZERO CUP

## Lisa Guenette & Mike Van Loenen

We would like to introduce Goal Zero Hero Lisa Guenette from Compass!

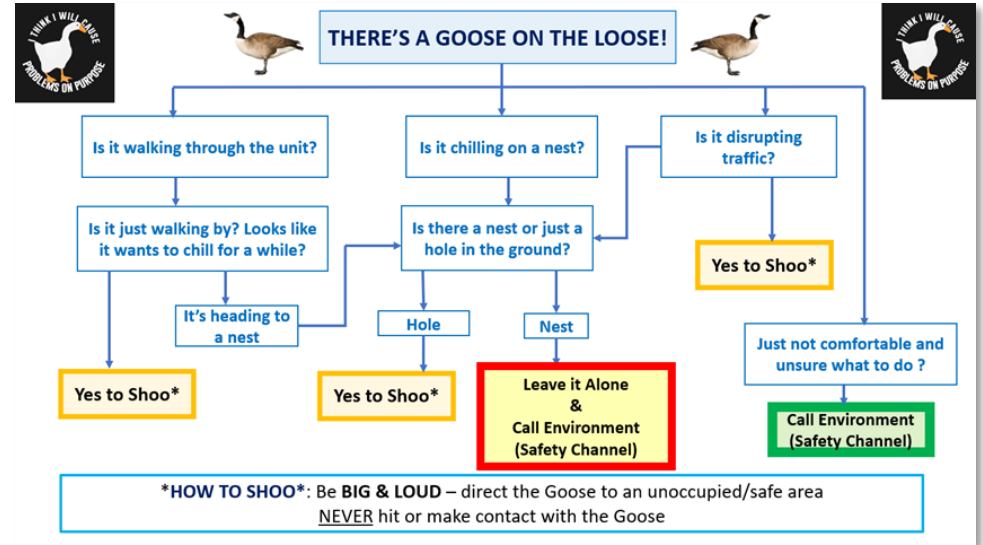
Lisa has been working at Scotford site since 2008 and recently celebrated her 10th work anniversary with Compass. She has been supporting Turnaround for just as long. Lisa brings to Turnaround hard work and dedication, a lot of tenacity to the TA 18 Plex, and is supportive of her coworkers—whether it be helping with training, rides to and from work or just supporting new folks on site. She is dedicated to safety and is always in compliance with PPE requirements associated with her trade.

Not only is Lisa the PERFECT example of hard work and Goal Zero, her awesome sense of humour brightens our toughest days.



# THERE'S A GOOSE ON THE LOOSE

\$10,000 + in Winnings



Mike Van Loenen is a Turnaround WLR Planner who has fully embraced his Adopt-A Crew assignment with Alexander Valve, a new to Turnaround Contractor. Mike took the initiative to arrange for the crew of two individuals to be included in the Edmonton Exchanger Weekly Safety Meeting. He has also provided them up with some Stop the Drop information including the Dropped Objects SWP to help set them up for TA success and orient them to the Culture at Scotford."



The Adopt-A-Crew process has proven that care influences trust and safety. Mike is knocking it out of the park!